

### SPECIFICATIONS

CONTACT RATING: 1A @120 VAC or 28 VDC  
 ELECTRICAL LIFE:50,000 make-and-break cycles at full load  
 CONTACT RESISTANCE: 20 mΩ max. initial @2-4 VDC,100 mA  
 INSULATION RESISTANCE: 1,000 MΩ min.  
 DIELECTRIC STRENGTH: 1,000 V RMS @ sea level.  
 OPERATING TEMPERATURE: -30°C to +85°C

### MATERIALS

CASE - diallyl phthalate ( DAP )  
 PLUNGER - Glass filled nylon or glass filled polyester (UL94V-0)  
 BUSHING - Copper alloy , nickel plated  
 HOUSING - Stainless Steel  
 CONTACT AND TERMINAL - Copper alloy, silver plated

How do you build the switches you need!!

The straight type, please see the (A);

The right angle P.C terminals, please see the (B)

(A) P 8 7 0 1 - C V 1 - 2 - C R - E - S 2 0 -

Switches Function		Cap or Actuator		Cap color		Bushing			Epoxy seal		Vertical support Bracket	
P8701	SPDT on-mom	none	(none)	1	white	F	thd /key-way	7.37	E	epoxy seal	(none)	
P8702	DPDT on-mom	CV	5.08	2	black	N	non-thd /key-way	7.37			S20	11.68
		CV1	7.70	3	red	F4	thd /key-way	6.35			V20	snap-in 11.68
		CV2	9.53	4	orange	N4	non-thd /key-way	6.35			<b>Rubber hood</b>	
		CV4	dress nut	5	yellow	E	thd /key-way	8.89			E4	for thd. bushing
		F22A	With frame	6	green	E4	thd/key-way	7.87			<b>RoHS code</b>	
		F32A	With frame and LED	7	blue	F8	thd /flat	7.37			H = RoHS Compliant	
				8	gray	N8	non-thd /flat	7.37				
				9	gray	F9	thd /flat	6.35				
						N9	non-thd /flat	6.35				
<b>Termination</b>												
						B	solder lug					
						C	P.C 1.27width					
						D	Quick connect					
<b>Contact Material</b>												
						Q	silver plated					
						R	gold plated					
						G	gold over silver					

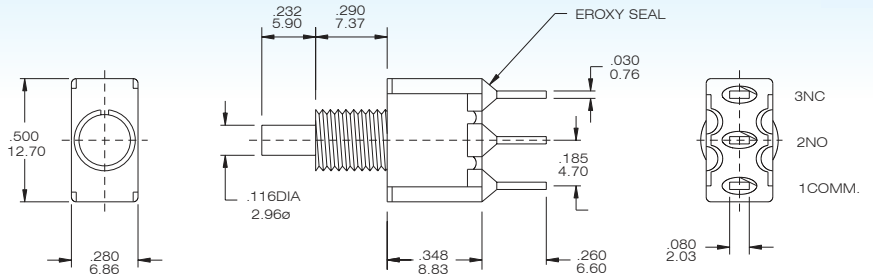
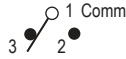
(B) P 8 7 0 1 - A 4 - C V 1 - 2 - R - E - S -

Switches Function		Right Angle		Cap		Cap color		Bushing			Contact Material	
P8701	SPDT on-mom	A4	Horizon	none	(none)	1	white	F	thd /key-way	7.37	Q	silver plated
P8702	DPDT on-mom	A5	Vertical	CV	5.08	2	black	N	non-thd /key-way	7.37	R	gold plated
				CV1	7.70	3	red	F4	thd /key-way	6.35	G	gold over silver
				CV2	9.53	4	orange	N4	non-thd /key-way	6.35	<b>Epoxy seal</b>	
						5	yellow	E	thd /key-way	8.89	E	epoxy seal
						6	green	E4	thd/key-way	7.87	<b>Support Bracket</b>	
						7	blue	F8	thd /flat	7.37	(none)	std.
						8	gray	N8	non-thd /flat	7.37	S	snap-in type
						9	gray	F9	thd /flat	6.35	<b>RoHS code</b>	
								N9	non-thd /flat	6.35	H = RoHS Compliant	

## SPDT



Model No.	Switching position	
P8701	on	Mom
Term. Comm.	1-3	1-2

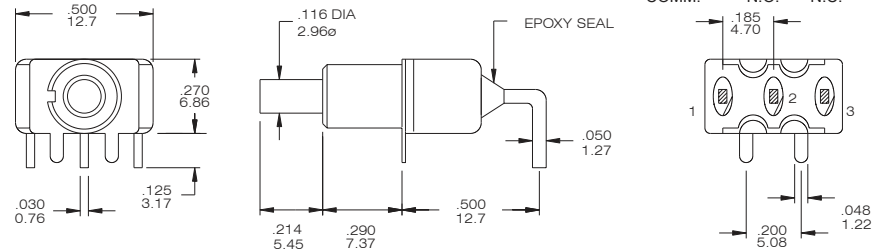
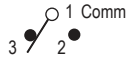


P8701-FBR-E

## SPDT

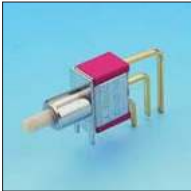


Model No.	Switching position	
P8701-A4	on	Mom
Term. Comm.	1-3	1-2

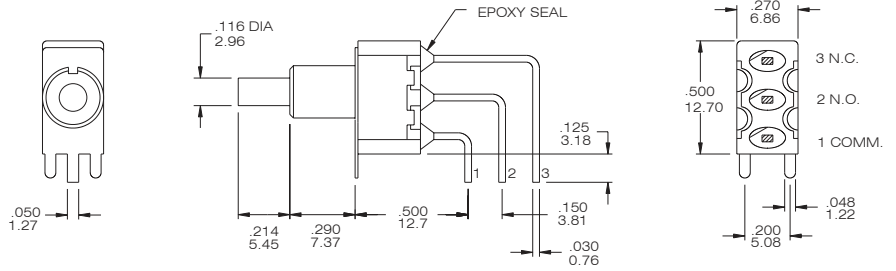


P8701-A4-NR-E

## SPDT



Model No.	Switching position	
P8701-A5	on	Mom
Term. Comm.	1-3	1-2

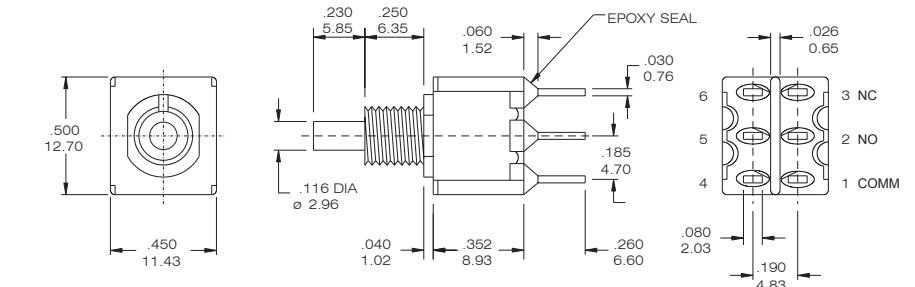
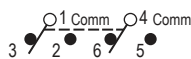


P8701-A5-NR-E

## DPDT



Model No.	Switching position	
P8702	on	Mom
Term. Comm.	1-3 4-6	1-2 4-5

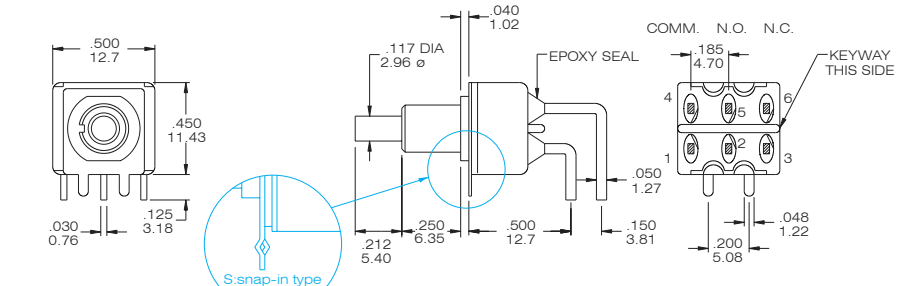
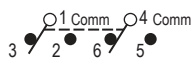


P8702-F4BR-E

## DPDT



Model No.	Switching position	
P8702-A4	on	Mom
Term. Comm.	1-3 4-6	1-2 4-5

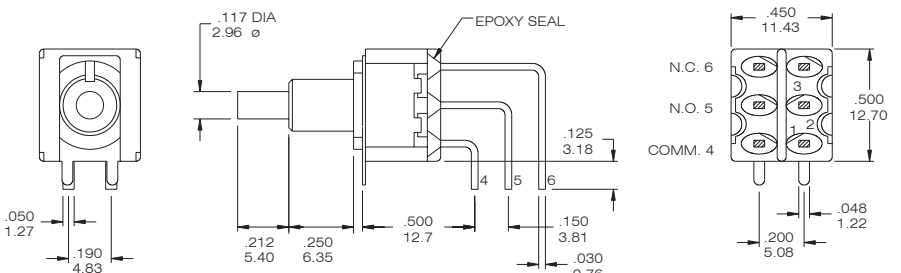
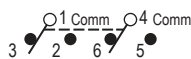


P8702-A4-N4R-E/ P8702-A4-N4R-E-S

## DPDT



Model No.	Switching position	
P8702-A5	on	Mom
Term. Comm.	1-3 4-6	1-2 4-5



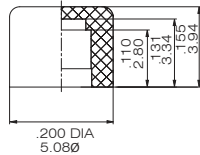
P8702-A5-N4R-E



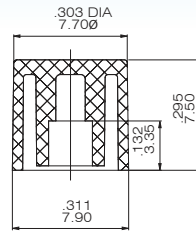
## Cap and Actuator Option

## Cap color Option

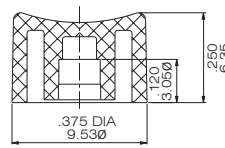
CV



CV1

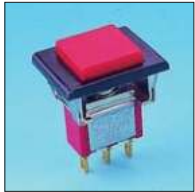


CV2

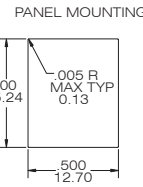
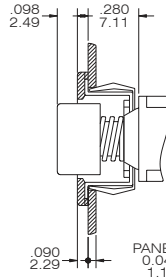
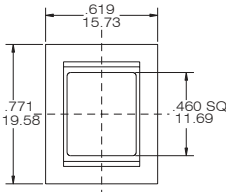


CAP & ACTUATOR OPTIONS	
1	White
2	Black(Std.)
3	Red
4	Orange
5	Yellow
6	Green
7	Blue
9	Gray

INDEX



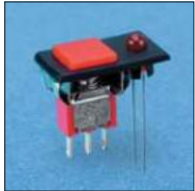
F22A



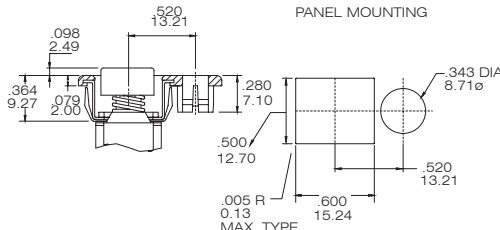
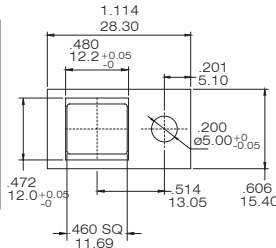
P870 \* -F22A- \* -BR-E

TOGGLE

ROCKER



F32A

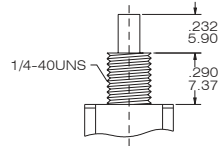
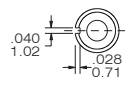


P870 \* -F32A- \* -BQ-E

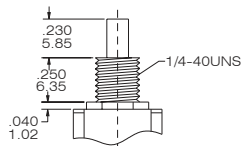
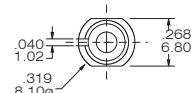
SLIDE

PUSH BUTTON

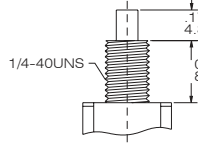
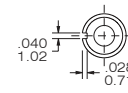
F thd.  
N non-thd.  
(only for SPDT)



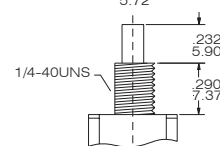
F4 thd.  
N4 non-thd.



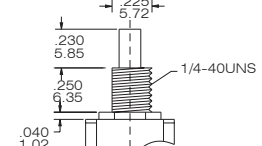
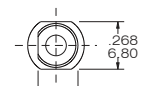
E thd.  
(only for SPDT)



F8 thd.  
N8 non-thd.  
(only for SPDT)



F9 thd.  
N9 non-thd.



DIP

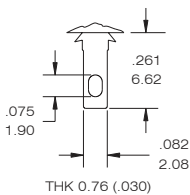
TACT

## TERMINAL OPTION (ONLY FOR THE STRAGHT TYPE)

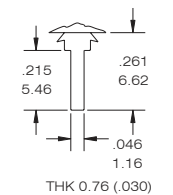
## TERMINAL SEAL OPTION

## RUBBER HOOD

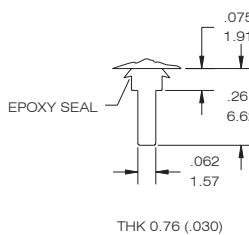
B STD



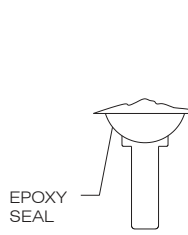
C PRINTED CIRCUIT



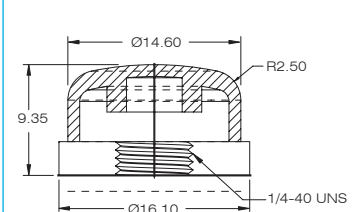
D QUICK CONNECT



E TERMINAL SEAL



E4





## CONTACT MATERIAL OPTIONS

CODE	CONTACT MATERIAL	TERMINAL MATERIAL	RATING
Q	Silver plated	Silver plated	1A @ 120V AC or 28 V DC;
R	Gold plated over nickel plated	Gold plated over nickel plated	0.4 VA MAX@ 20V AC or DC MAX
G	Gold plated over silver plated	Gold plated over silver plated	0.4 VA MAX @ 20 V AC or DC MAX or 1 A @ 120V AC or 28 V DC;

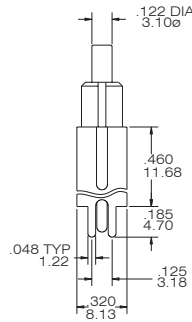
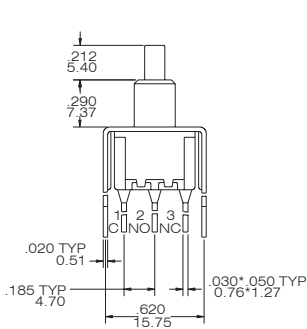
## VERTICAL SUPPORT BRACKET OPTION

(only apply the straight type terminal-Please modify the terminal option is "c" code)

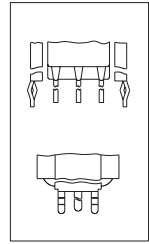
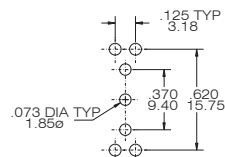
### S20/V20



### SPDT



### P.C. MOUNTING



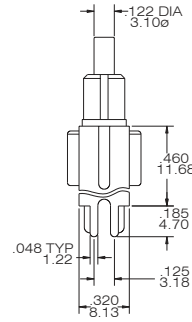
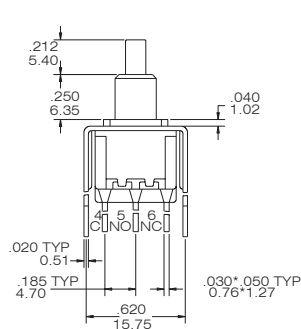
### SNAP-IN V 20

### P8701-NCR-E-S20

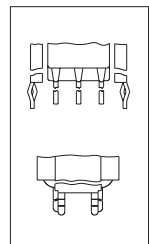
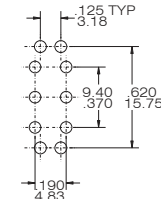
### S20/V20



### DPDT



### P.C. MOUNTING

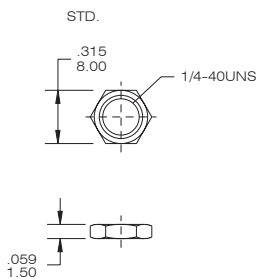


### SNAP-IN V 20

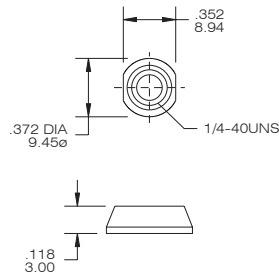
### P8702-N4CR-E-S20

## The hard ware of T80-P push button switches

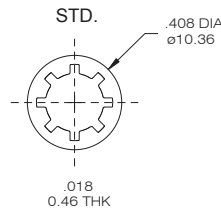
### NUT



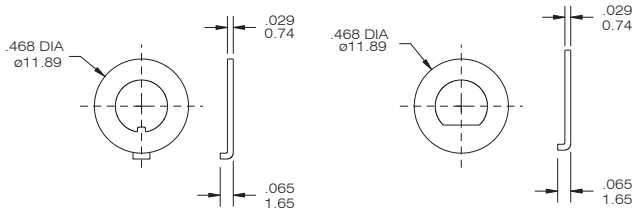
### DRESS NUT



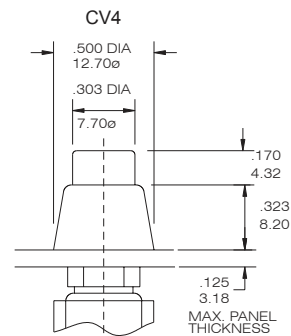
### LOCK WASHER



### LOCKING RING



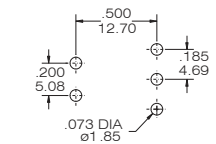
### DRESS NUT & CAP



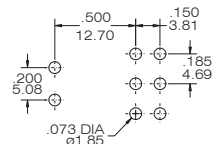
To order dress nut only.

## The P.C.B mounting Dimension

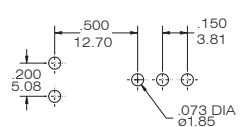
### P8701-A4



### P8702-A4



### P8701-A5



### P8702-A5

