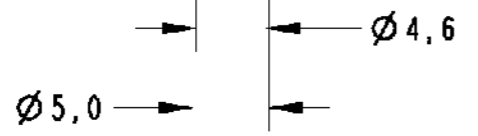
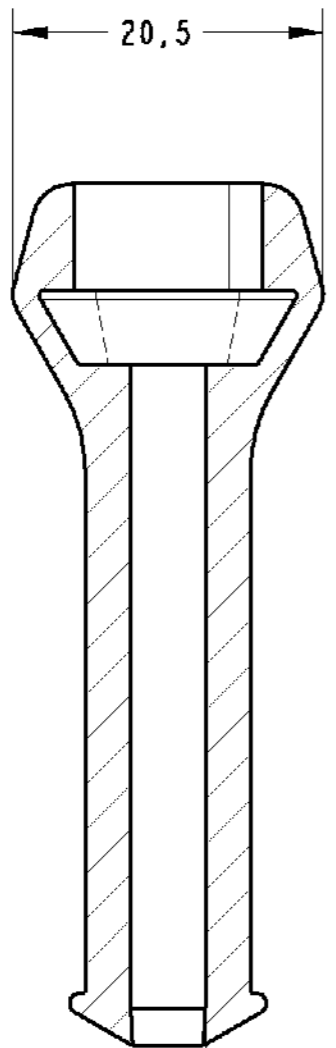
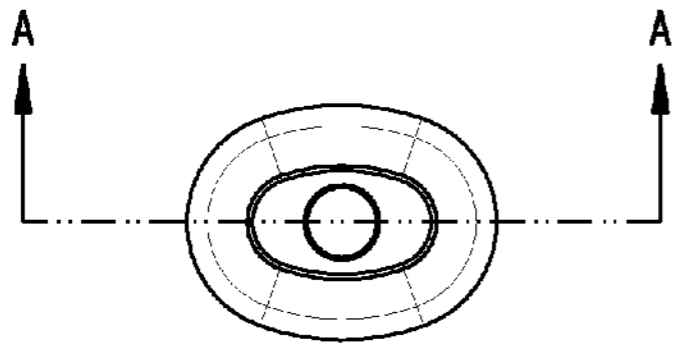


THIS DRAWING IS UNPUBLISHED. RELEASED FOR PUBLICATION
 © COPYRIGHT BY ALL RIGHTS RESERVED.

LOC	DIS	REV	DESCRIPTION	DATE	DWN	APVD
AP	-	B1	REVISED PER ECO-11-005139	19MAR11	RK	HMR



SECTION A-A

① - ELASTÔMERO SAE J200, 2BC 414, A14, B14, C12, E014, F17, Z1
 Z1=RESISTÊNCIA RASGO, ASTM D624 - 20kg/cm MIN.

② - ELASTÔMERO SAE J200, 2BC 514, A14, B14, C12, E014, F17, Z1
 Z1=RESISTÊNCIA RASGO, ASTM D624 - 20kg/cm MIN.

① - ELASTOMER SAE J200, 2BC 414, A14, B14, C12, E014, F17, Z1
 Z1= TEAR RESISTANCE, ASTM D624 -20kg/cm MIN.

② - ELASTOMER SAE J200, 2BC 514, A14, B14, C12, E014, F17, Z1
 Z1= TEAR RESISTANCE, ASTM D624 -20kg/cm MIN.

②	PRETO/BLACK	40±5 SHORE A	ELASTOMER ①	880810-2
	PRETO/BLACK	50±5 SHORE A	ELASTOMER ②	880810-1
	FINISH	HARDNESS	MATERIAL	PART NUMBER

DIMENSIONS: mm		TOLERANCES UNLESS OTHERWISE SPECIFIED:		DWN M.L. OGAWA 09JUN99	TE Connectivity	
		0 PLC = 1 PLC ±0.3 2 PLC ± 3 PLC + 4 PLC + ANGLES ±1° FINISH		CHK P.L. FARIA 10JUN99		NAME COVER CAP 2 POSN
				APVD J.M.M. NETO 10JUN99		
MATERIAL SEE TABLE		FINISH SEE TABLE		APPLICATION SPEC -	RESTRICTED TO -	
CUSTOMER DRAWING				WEIGHT -	SIZE A3	
				DRAWING NO 880810	SCALE 2:1	
				SHEET 1	OF 1	
				REV B1		

DO NOT REVISE EXCEPT BY CAD