

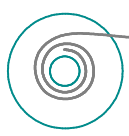
Fuse Holder Body (1 : 1), H1131

Fuse Holder Cover (1 : 1), H1133

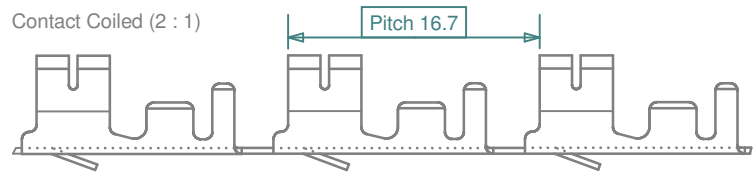
**Notes:**  
 Cable 0.75 - 2.0 mm<sup>2</sup> (18 - 14 AWG)  
 Cable insulation Ø 2.0 - 3.5 mm

**Materials:**  
 Body: PA 66 GF30, black  
 Cover: PC Lexan 121R, clear  
 Contact: Brass 70 H30, Sn plated

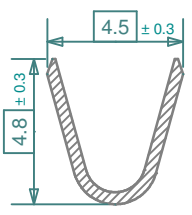
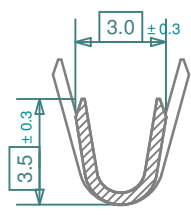
With contact in body, using 0.63 ± 0.02 mm blade, coined 0.35 mm  
 Insertion force: 8 - 24 N  
 Extraction force: 3 N minimum



Coil winding (not to scale)  
 Bobbin: Ø 27cm, W 17cm approx.  
 5000 pieces per reel.

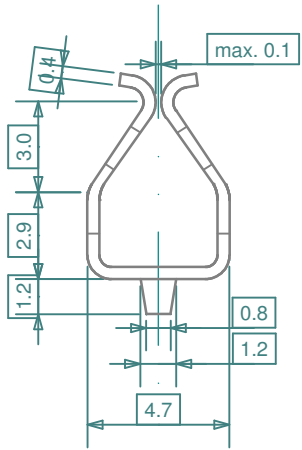
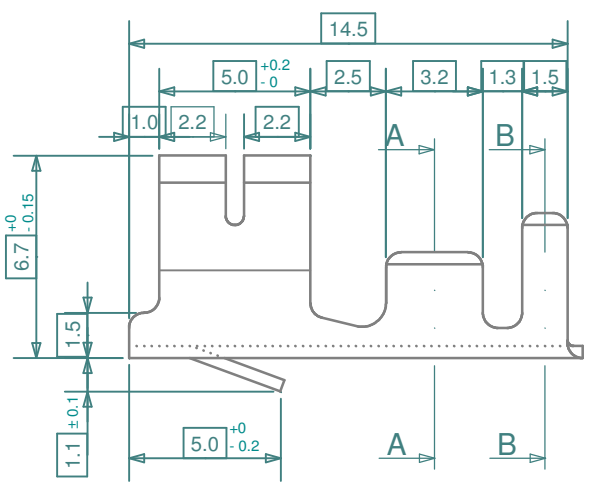
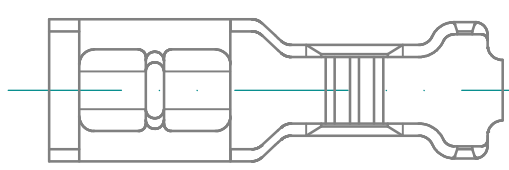


Fuse Holder Contacts (4 : 1), CCX135FR - coiled, CCX135FL - loose



A - A

B - B



Revisions			Date	Appr.
	Date	Type	Drawn	10/99
a	03/08	Re-drawn	Checked	08/11
b	04/08	added coil information	Standards	
c	08/11	updated contact part numbers	Approved	08/11



Scale		Title	H1130 series, normOTO blade fuse holder
Projection	Tolerance ± 0.2 mm unless otherwise noted	Drawing type	schematic
		Drawing number	H1130 drawing 1
		Sheet	1 of 1
		Layers / Sheet	01 2 3 4 6 8 9 10 11 Sheet 01